



Welcome to Binghamton!

VM Workshop 2022



It's great to be back!





Who is this guy?

- Gerard Howells – Recovering Systems Programmer
- Funny accent
- ~10 Years on the Mainframe
- 1st love is VM!

kynndryl



Thank you Bing!

BINGHAMTON

U N I V E R S I T Y

STATE UNIVERSITY OF NEW YORK



Has it really been 50 years?



But virtualization is new isn't it?





Why has VM persisted?





Culture and Community



The Future



The VM Workshop Planning Committee

Bill Bitner

Marc Smith

Len Santalucia

Marianne Eggett

Len Diegel

Chip Davis

Wilhelm Mild

Andy Hartmann

Dianne Griffin

Mike Riggs

Mike Giglio

Gonzalo Muelas-Serrano

Chuck Morse

Jim Moling

Bill Munson

Brian Hugenbruch

Kate Stringfield

Andrea Palmeri

Brian Jagos

Eric Schuler-Dalverny

Phil Tully

Rich Smrcina

Jacob Gagnon



VM Mobile Museum

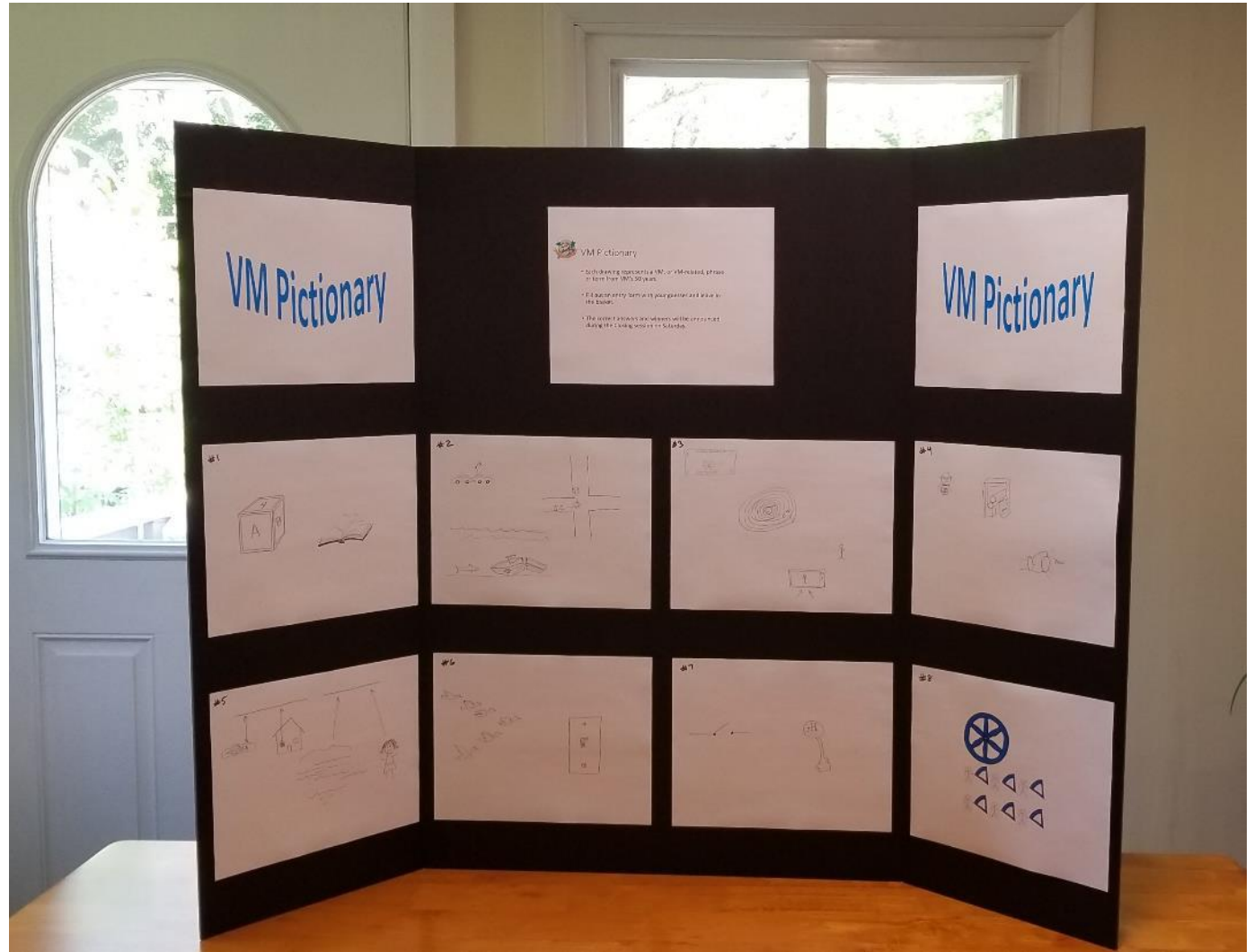
- Be sure to check out the VMMM and other memorabilia
- Located in Biotechnology Building, Room 2201





VM Pictionary

- Each drawing represents a VM, or VM-related, phrase or term from VM's 50 years.
- Fill out an entry form with your guesses and leave in the basket.
- The correct answers and winners will be announced during the Closing session on Saturday.
- No professional artists were engaged in this, so set expectations appropriately.
- Located in Biotechnology Building, Room 2201.



Sponsors





BINGHAMTON

UNIVERSITY

STATE UNIVERSITY OF NEW YORK

Harvey Stenger

President – Binghamton University



Keynote

VM Workshop

Kara Todd

Director of Linux, IBM zSystems and LinuxONE

karam@us.ibm.com

Tina Tarquinio

Director, IBM zSystems Product Management

tinatar@us.ibm.com

Digital transformation turns to reinvention

10 years of digitization in under **one year**



Source: IBM Strategy, McKinsey & Company, IBM Business Value (<https://ibm.co/virtual-enterprise>)

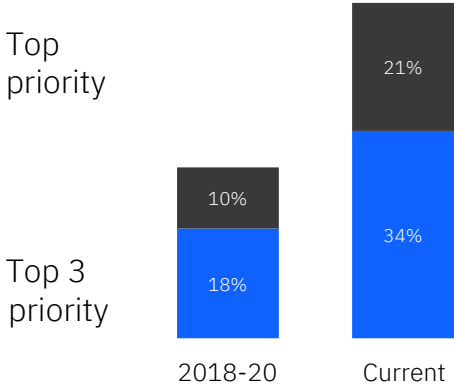
Urgency to build new businesses that create new advantage

- Technological innovation
- Customer-centricity
- Ecosystem co-creation
- Sustainability

7 in 10

CEOs are driving large-scale change in value creation and ways of working

By 2026, half of revenue will come from businesses that do not exist today



6 in 10

rank new business building as a top priority – doubling since the global disruption

Major challenges to address

... as digital transformation accelerates, extends to mission-critical processes



Manage increased complexity, given heterogenous IT/ clouds

- 75% users utilizing two+ public clouds
- 70% workloads not on public clouds
- 20B internet-connected devices by '24



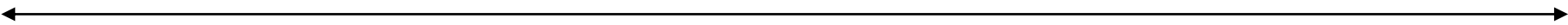
Derive value from an explosion of available data

- 2-3x growth in total data by '25
- Chief Data Officer role growing fast
- Top AI needs for decision making and automated business operations



Drive competitive operations, despite worker shortages

- 30% of innovation, client support, ecosystem and workforce, virtualized by '23
- 80% Enterprise agree that intelligent automation can improve business results⁶



Protect businesses from cybercrime: 40% increase in number of malicious security breaches in 2020

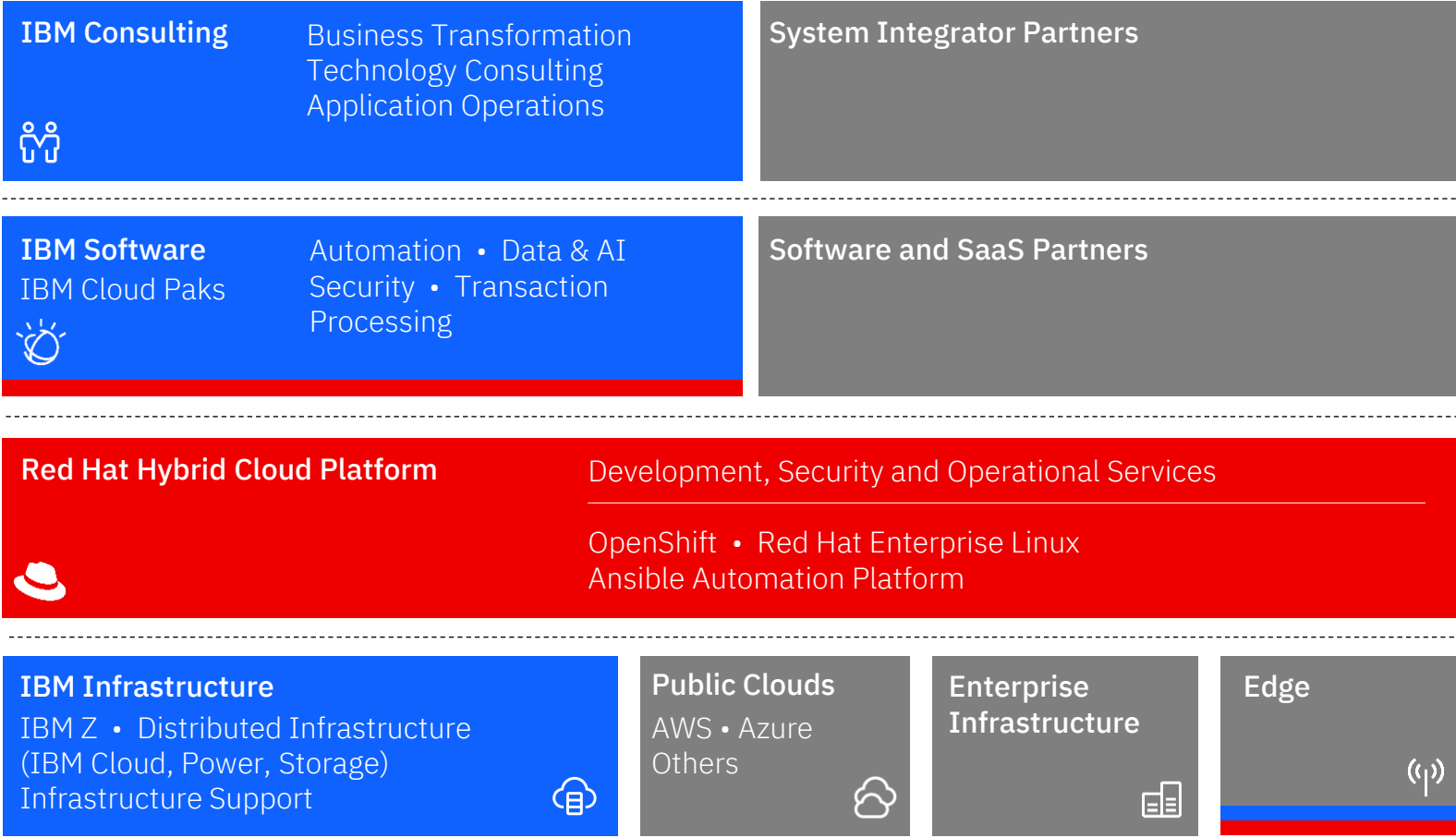


Be sustainable end-to-end: 85% of companies have a sustainability strategy, only 35% have acted on it

Source: Industry Analyst Blend, IBM Perceptions Research; IBM Institute for Business Value

IBM approach for Hybrid Cloud and AI

Be the catalyst that makes the world work better



Hybrid Cloud differentiators with IBM Z & LinuxONE

IBM Z Benefits

Low Latency and Large Volume Data Serving and Transaction processing

Enterprise class infrastructure – Elastic, Scalable, Available and Resilient

Highest levels of Security and Compliance



Adoption Patterns

Enterprise Hybrid Cloud
2.4M containers-per-box

Colocation & Modernization with z/OS
7x shorter batch windows

Secure Cloud Native
Confidential computing

Extreme Consolidation and scalable Data Serving
69% lower Total Cost of Ownership

99.99999%
system availability

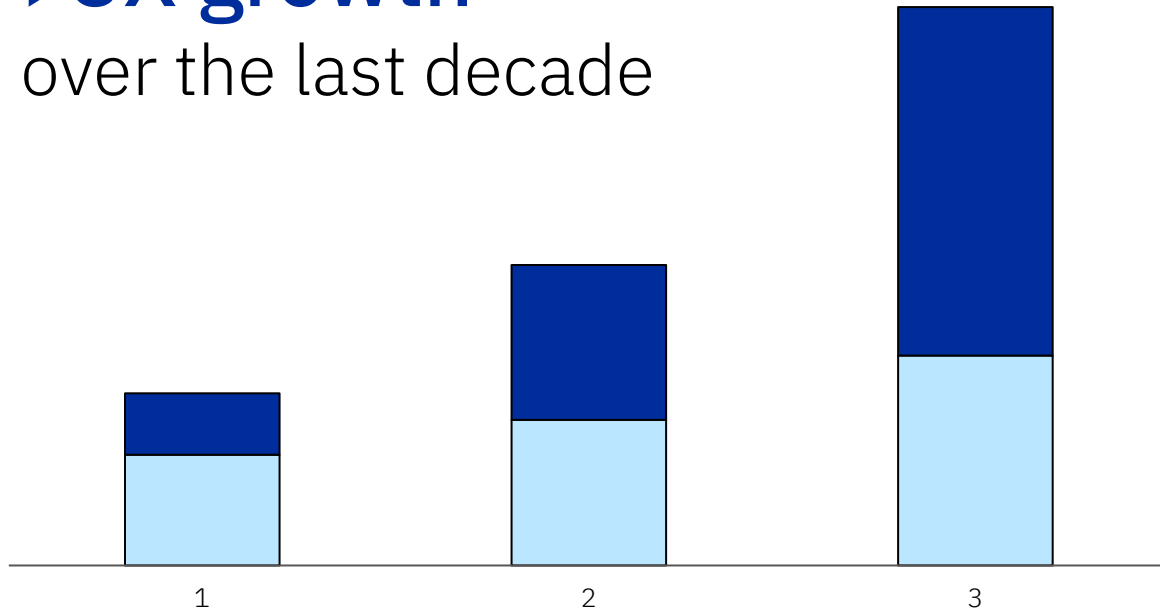
4:1 *better data-center footprint*
2:1 *lower power envelope*

3.8x better *Java throughput*

Enterprise grade. **Open** by design. **Secured** by IBM Z.

IBM Z: Increasing momentum in the era of Hybrid Cloud

>3X growth
over the last decade



Workload as measured by installed Million Instructions Per Second (MIPS)

Standard MIPS 
Specialty MIPS 

67 of the Fortune 100

45 of the world's top 50 banks

8 of the top 10 insurers

4 of the top 5 airlines

7 of the top 10 global retailers

8 of the top 10 telco's

24 of the top 25 countries by GDP*

*24 of the top 25 global countries ranked according to their GDP have public sector organizations that run on IBM Z or IBM LinuxONE

Enterprise-grade Linux

The best of **ENTERPRISE COMPUTING**

- Dynamic Resource Allocation
- HW optimized virtualization
- Non-Disruptive Scalability
- Continuous Business Availability
- Operational Efficiency
- Trusted Security
- Data and Transaction Serving



The best of **LINUX & OPEN**

- Freedom & Agility
- Standards Based
- Common tooling
- Speed of Innovation
- Developer Productivity
- Community Collaboration
- Quality of Software



Mongo as a Service on IBM zSystems – A large NA Bank

Solution elements

Function	On IBM zSystems
Deployment Catalog	Integrated with existing tools
Automation	Provision via Ansible / IBM CIC
Mongo Instance	Mongo Enterprise on IBM zSystems
OS & Virtualization	RHEL 8 / IBM z/VM
Encrypt Data @ Rest	H/W accelerated on IBM zSystems and Storage
Compression	H/W accelerated on IBM zSystems and Storage
FFIEC Appendix J	IBM Safeguarded Copy
Logging	Mongo Ops Manager

Solution benefits

- 50% more efficient in terms of data center space, power, cooling
- Support for Franchise Critical Applications
- FFIEC Appendix J Support for backup and restore via storage

Today

- In Production for an initial set of Mongo Applications

Future

- Expand to more Mongo deployments as use grows
- Apply same approach to Oracle, EDB, Kafka, Cassandra (ScyllaDB), OpenShift etc.

Business requirements from the large North American bank

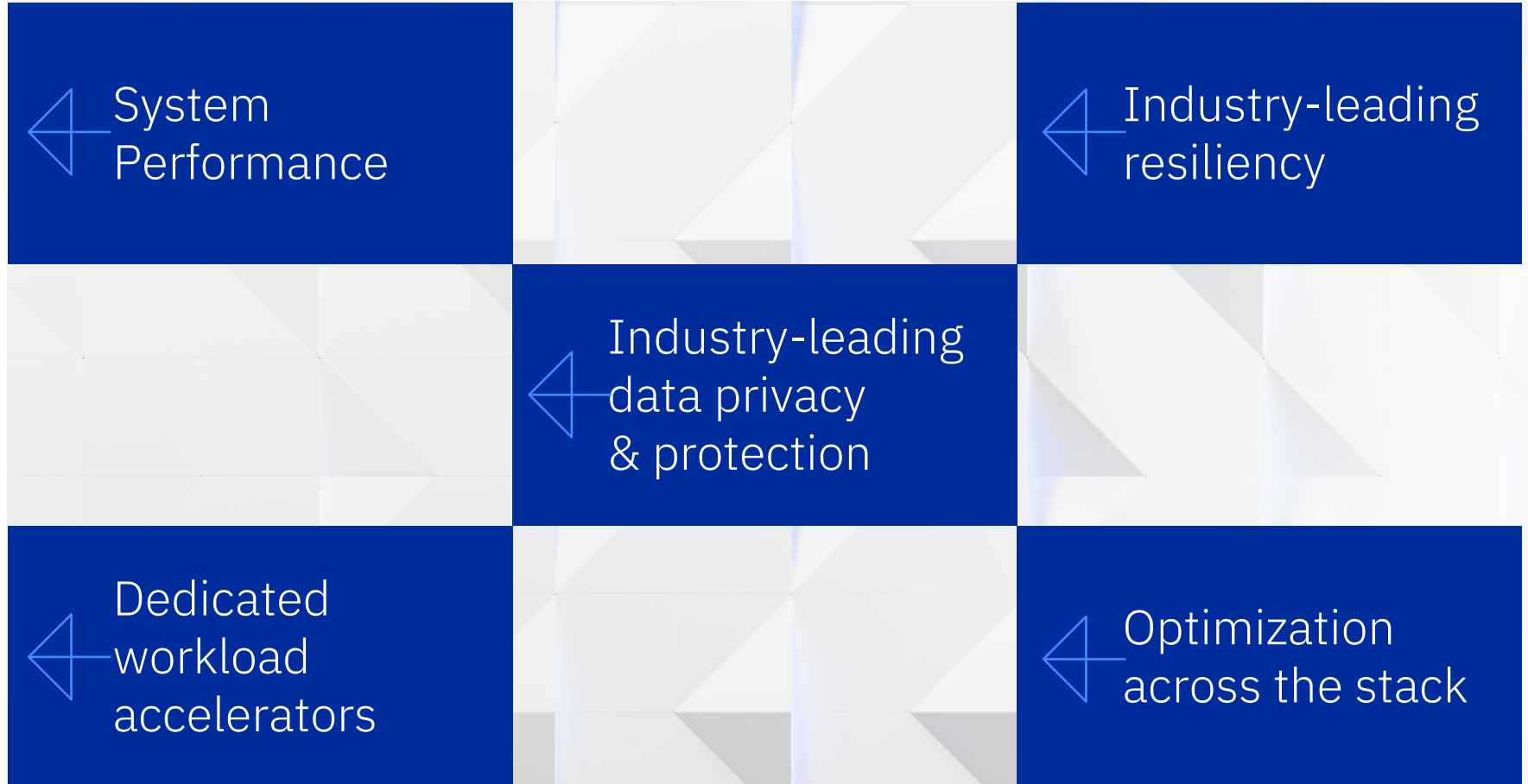
- FFIEC Appendix J compliant technology solution for Franchise Critical applications running MongoDB
- Sub-second recovery speed for multi-TB instances to meet strict RTO requirements



Tina Tarquinio
Director, IBM zSystems Product Management
tinatar@us.ibm.com

IBM Z design principles

Ensure IBM Z remains the premiere data serving and transaction processing platform through ...

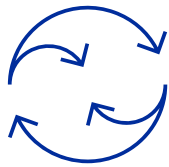




IBM

IBM z16™ is built to build

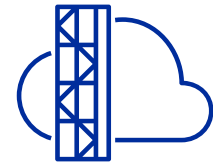
We built a powerful and secure platform for business.
Let's build the future of yours.



Predict and Automate for
Increased Decision Velocity



Secure with a Cyber
Resilient System



Modernize with
Hybrid Cloud

At the heart of IBM z16: IBM Telum Processor

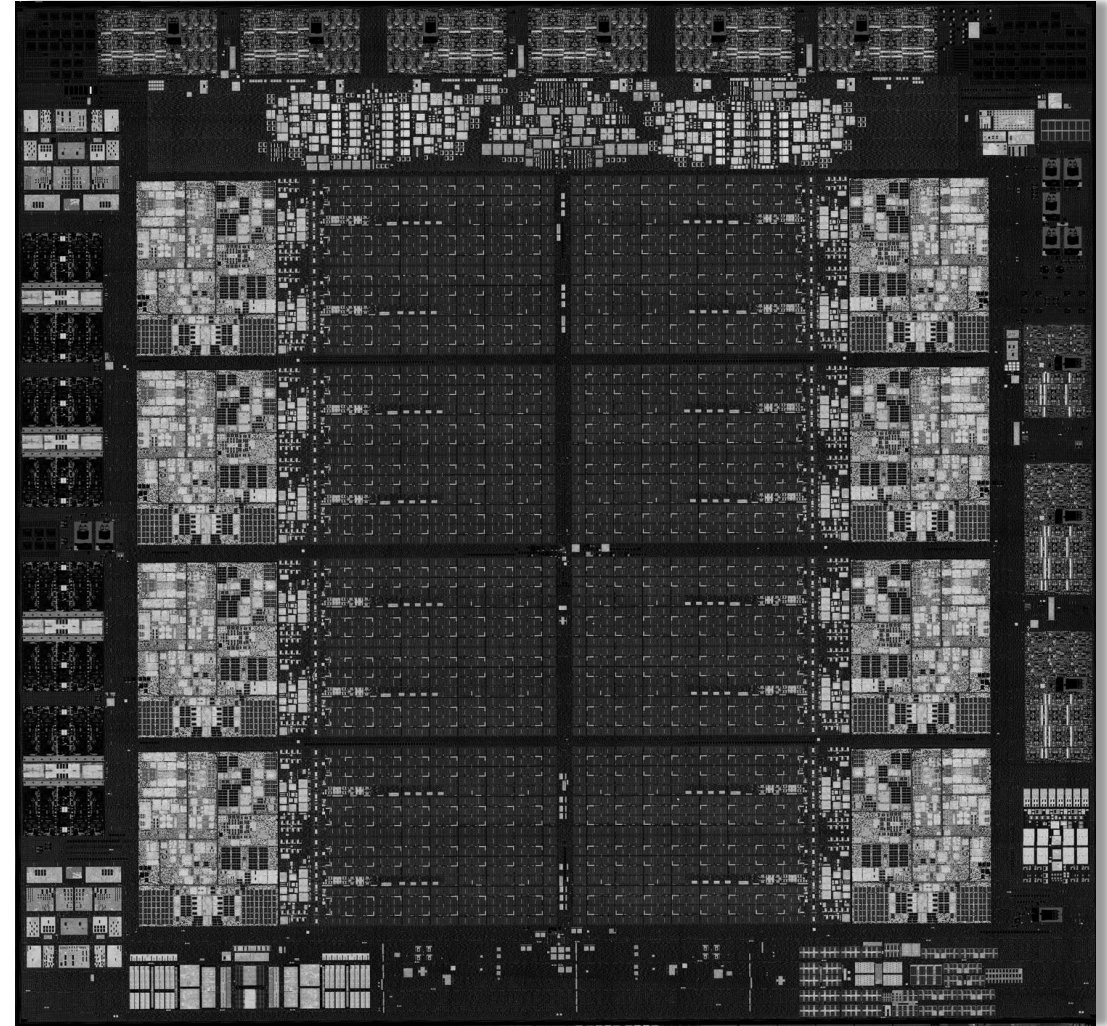
Optimized for enterprise
workloads with embedded
real-time AI insights

Performance and Scale

On-Chip Integrated Accelerator
for AI

1.5x Cache growth

7nm, 5.2GHz



IBM z16

Built to build the future of business

Up to 200 Cores

11% per core performance improvement

17% total system capacity growth

25% more processor capacity per drawer

Up to 40TB memory

1 to 4 19-inch frames

¹see notes for claims

VM Workshop © 2022 IBM Corporation



Design thinking IBM z16 co-created with clients

70+
enterprises

IBM Z Sponsor user program
IBM Z Design Council
GM Advisory Council
Cross section of users
(geos, industries, size)
1 on 1 Interviews and Surveys
Hill value validation
Prototype evaluations

1100+
interaction
hours

2x more engagements over IBM z15
from developers, architects, to execs

Driven by early engagements across
IBM Z and LinuxONE

Innovations through cross-team
alignment from product management,
design, marketing, development, sales
and support

23
user
personas

Application Architect
Application Developer
Application Owner
Auditor
Chief Data Officer
Chief Privacy Officer
Chief Sustainability Officer
Cloud Architect
CTO, CIO, CFO, CISO / CIRO
Data Architect
Dev Ops Engineer
Director of Mainframe Datacenter
Evidence Provider
Infrastructure Architect
Line of Business Owner
Security Architect
System Admin
VP of AI / Analytics
VP of Application Development
VP of Infrastructure

Thank You

Kara Todd

Director of Linux, IBM Z and LinuxONE

karam@us.ibm.com

Tina Tarquinio

Director, IBM zSystems Product Management

tinatar@us.ibm.com