



VSEⁿ Connectors

Getting started with some use cases

David Jamieson
21st Century Software

VSEⁿ Connectors - Introduction

- Introduced by IBM with VSE/ESA 2.5
- New functions and technologies introduced with every release of VSE
- Will continue to be provided by 21st Century Software as part of the VSEⁿ installation package

VSEⁿ Connectors

- Provide access to VSEⁿ applications from Web and Mobile clients.
- Provide access from VSEⁿ to external databases
- Modernise administration, operation and automation of VSEⁿ

VSEⁿ Administration and Operation

- VSEⁿ Fast Path to Linux on Z Systems
- VSEⁿ Connector Server and Client
- VSEⁿ Virtual Tape Server
- VSEⁿ Virtual FTP Server
- VSEⁿ Navigator
- VSEⁿ Health Checker

Requirements

- Minimum
 - Linux or Windows running a minimum of Java 5.
- Latest supported java versions
 - LFP – Java 17
 - VSEⁿ Connector Client – Java 18
 - VSEⁿ Virtual Tape Server – Java 18
 - VSEⁿ Virtual FTP server – Java 18
 - VSEⁿ Navigator – Java 18 (or Java 14 for SSL)
 - VSEⁿ Health Checker – Java 18

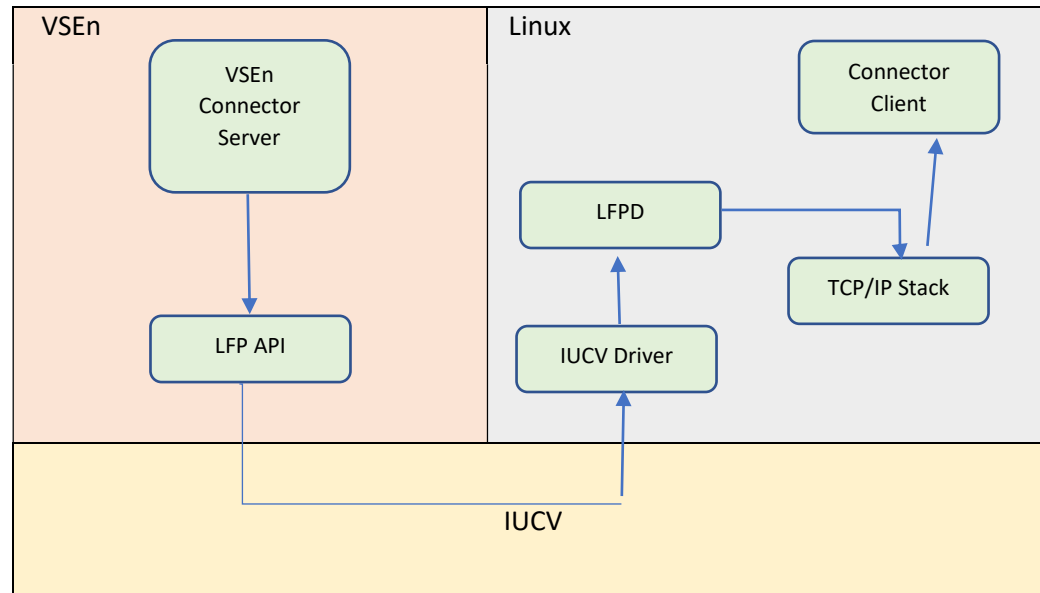
Linux Fast Path

- Provides a remote TCP/IP stack for VSEⁿ
- Socket request forwarded to the Linux system
- Not intended to to replace a full function TCP/IP product.
- Reliable Communication method
- Less TCP/IP overhead

Linux Fast Path – Connectivity Options

VSE ⁿ	Linux	Connectivity
z/VM Guest	z/VM Guest	IUCV
LPAR	LPAR	HiperSockets
z/VM Guest	LPAR	HiperSockets

Linux Fast Path – z/VM to z/VM Connection



Linux Fast Path – Required Configuration

VSEⁿ Systems

VSE001 (V01TOL08)

VSE002 (V02TOL08)

VSE003 (V03TOL08)

VSE004 (V04TOL08)

... etc ...



Linux on Z

LFPD (L08TOV01)

LFPD (L08TOV02)

LFPD (L08TOV03)

LFPD (L08TOV04)

... etc ...

Linux Fast Path Installation

- Delivered with VSEⁿ Installation material
- Ftp to your Linux system.
- Make sure it's executable
 - `chmod 777 vselfpd-1.5.0-1.s390x.rpm`
- Run the Installation program
 - `rpm -i vselfpd-1.5.0-1.s390x.rpm`

Linux Fast Path - Installation

- Binaries
 - /opt/21csw/vselfpd/sbin
- Configuration Files
 - /etc/opt/21csw/vselfpd/confs-available
 - /etc/opt/21csw/vselfpd/confs-enabled
- Service initialization
 - /etc/init.d/vselfpd
 - /etc/profile.d/vselfpd.sh

Only root can start LFP

Linux Fast Path Configuration

- For VSE001 to Linux08
 - Create a configuration file for the lfpd daemon
 - /etc/opt/21csw/vselfpd/confs-available/lfpd-L08TOV01.conf
 - Create a soft link in the confs-enabled directory
 - In -s /etc/opt/21csw/vselfpd/confs-available/lfpd-L08TOV01.conf
/etc/opt/21csw/vselfpd/confs-enabled

Linux Fast Path – Configuration in Linux

```
#  
# lfpd configuration file for linux08 to vse001 connection  
#  
  
IUCV_SRC_APPNAME = L08TOV01  
PEER_IUCV_VMID = VSE001  
PEER_IUCV_APPNAME = V01TOL08  
  
IUCV_MSGLIMIT = 1024  
MTU_SIZE = 8192  
MAX_SOCKETS = 1024  
INITIAL_IO_BUFS = 128  
WINDOW_SIZE = 65535  
WINDOW_THRESHOLD = 25  
  
# VSE_CODEPAGE = IBM1047  
VSE_CODEPAGE = EBCDIC-US  
  
# Specify the IP address (IPv4 and IPv6) that should be returned by a  
# GETHOSTID function call.  
VSE_HOSTID = 192.168.21.41  
  
DISABLE_IPV6=YES  
  
# Restrict all BIND calls from VSE to the configured VSE_HOSTID.  
RESTRICT_TO_HOSTID = yes  
  
# The LOGLEVEL to use.  
LOG_INFO_MSG = no
```

Linux Fast Path – Configuration in VSEⁿ

- Activation

```
// JOB LFPSTART
// EXEC IJBLFPOP,PARM='START DD:SYSIPT LOGALL'
* Instance ID
ID                = 08
DeviceType        = IUCV
MTU                = 8192
IucvMsgLimit      = 1024
InitialBufferSize = 512K
MaxBufferSize     = 4M
IucvSrcAppName    = V01TOL08
IucvDestAppName   = L08TOV01
IucvDestVMId      = LINUX08
WindowSize        = 65535
WindowThreshold   = 25
/*
/ &
```

Linux Fast Path – Checking Status

- LINUX - Lfpd-ctl list

```

name      enabled  running  status
-----
L08TOV01  yes      yes      Connected to VSE0001
L08TOV02  yes      yes      Connected to VSE0002
L08TOV03  yes      yes      Listening
L08TOV04  yes      yes      Listening

```

- VSE - // EXEC IJBLFPOP,PARM='LIST'

```

BG 0000 * *****
BG 0000 * LIST ACTIVE LFP INSTANCES *
BG 0000 * *****
BG 0000 LFPB025I ACTIVE LFP INSTANCES: 1
BG 0000 INSTANCE 08 HAS 1 ACTIVE TASK
BG 0000 LFPB026I END OF ACTIVE LFP INSTANCES LIST.

```

VSEⁿ Connector Client

- Provided with VSEⁿ installation package
- No longer available on the Extended base tape
- ftp setup.jar and setup.sh to Linux
- Make setup.sh executable
- Run setup.sh

VSEⁿ Connector Server

- Skeleton in ICCF library 59
- Modify if using LFP
 - Remove // EXEC REXX=IESWAITR,PARM='TCPIP00'
 - Add // SETPARAM LFP\$ID

```
// JOB STARTVCS START UP VSEn CONNECTOR SERVER
// OPTION LOG
// OPTION SYSPARM='08'
// SETPARAM LFP$ID=08
// LIBDEF *,SEARCH=(PRD2.CONFIG,PRD1.BASE,PRD2.SCEEBASE)
// EXEC IESVCSRV,PARM='DD:PRD2.CONFIG(IESVCSRV.Z)'
```

VSEⁿ Connector Server - Configuration

- IESVCSR.V.Z
 - VSE001
 - SERVERPORT = 2861
 - VSE002
 - SERVERPORT = 2862
 - VSE003
 - SERVERPORT = 2863
 - VSE004
 - SERVERPORT = 2864
- IESLIBDF.Z
 - List of Library DTFs

VSEⁿ Connector Server – Socket Multiplexor

```
// EXEC ASMA90,SIZE=(ASMA90,64K),PARM='EXIT(LIBEXIT(EDECKXIT)),SIZE(MAXC
      -200K,ABOVE) '
EDCTCPMC CSECT
EDCTCPMC AMODE ANY
EDCTCPMC RMODE ANY
*
*      Using sysid 0 for TCP/IP and SSL from CSI (default value):
EDCTCPME SYSID='00',PHASE='$EDCTCPV'
*
*      Using sysid 1 for TCP/IP and SSL from BSI (IPv4 or IPv6):
EDCTCPME SYSID='01',PHASE='BSTTTCP6'
*
*      Using sysid 2 for TCP/IP via LFP and SSL via OpenSSL:
EDCTCPME SYSID='02',PHASE='IJBLFPLE',SSLPHASE='IJBSSLLE'
*
*      Using sysid 8 for TCP/IP via LFP
EDCTCPME SYSID='08',PHASE='IJBLFPLE'
END
/*
```

VSETAPE - Tips

- Modify TAPESRVR JCL
 - // OPTION SYSPARM=,08‘
- Use SCOPE=JOB

```
// VTAPE START,UNIT=181,LOC=192.168.21.41:2386,           X
          FILE='/home/vsemaint/vse005/TAPE04.AWS',SCRATCH, |  X
          SCOPE=JOB
```

- Change default install directory
 - /opt/21CSW/vsevtape instead of /opt/21CSW/‘VSEn VTAPE Server‘/

VTAPE as a Service

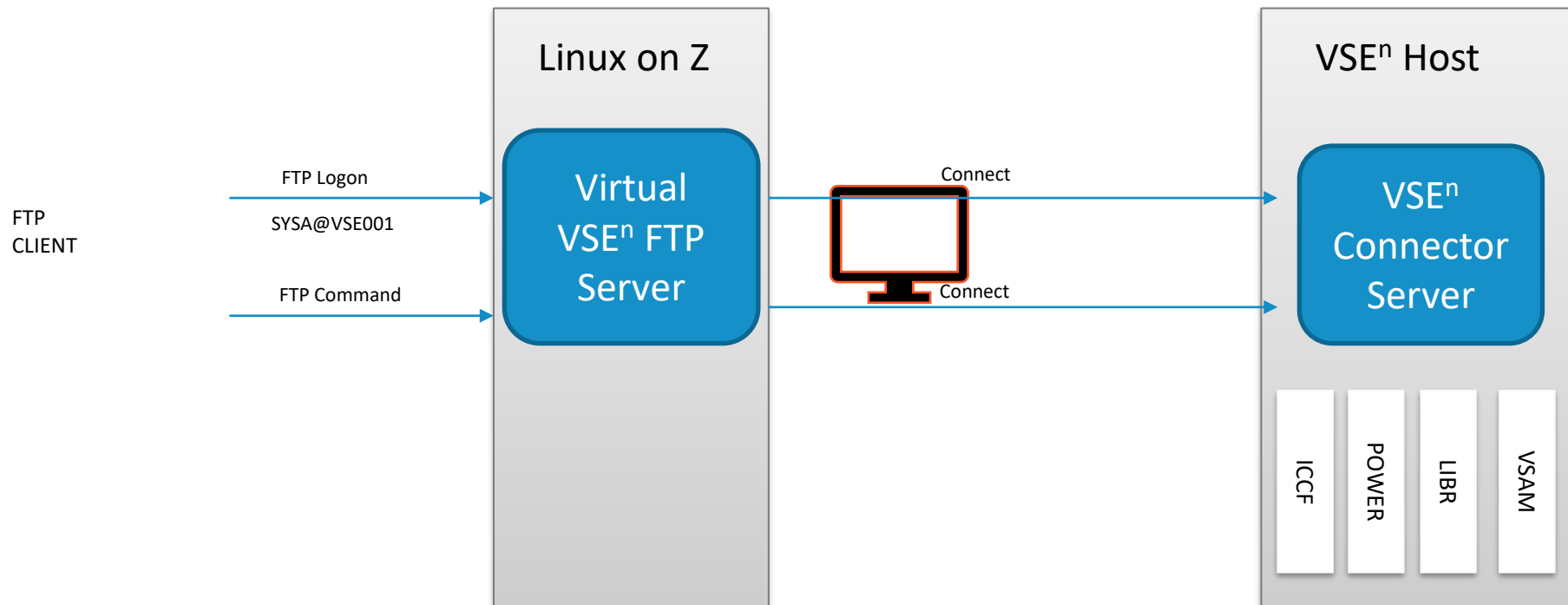
- Create a systemd service file
 - /etc/systemd/system/vtaped

```
[Unit]
Description=VSEn virtual tape
After=network.target
StartLimitIntervalSec=0

[Service]
User=vsemaint
Type=simple
ExecStart=/opt/21CSW/vsevtape/run.sh

[Install]
WantedBy=multi-user.target
```

Virtual VSEⁿ FTP Server



Virtual VSEⁿ FTP Server - Configuration

VirtualVsenFtpServer.properties

```
# The FTP listen port. (Default = 21)
listenPort=21

# The IP address the Virtual VSEn FTP Server will be bound to. (this Linux Server).
bindAddress=192.168.21.41

# The user idle timeout. (Default 15 minutes)
idleTimeoutMinutes=15

# The host name or IP address of the default VSEn host that runs the
# VSE Connector Server. (Using LFP so this is the IP address of this Linux system)
defaultVseHost=192.168.21.41

# Allow multihost access?
# If true the FTP user name can contain a hostname or alias name of a VSEn system
multiHostAllowed=true

# If true then the VSE host name (either the one configured using defaultVseHost or
# the one specified with the FTP user name when multiHostAllowed=true) MUST be defined
# as an alias in the HostAliases.properties file. Additional configuration can only
# be done inside the HostAliases.properties file.
# If true then any hostname that is not defined as an alias is rejected.
# Uncomment and edit to use another value than false.
allowOnlyAliases=true
```

Virtual VSEⁿ FTP Server - Configuration

```
HostAliases.properties  
  
# ----- V S E 0 0 1 -----  
VSE001  
VSE001.vseHost=192.168.21.41  
VSE001.vsePort=2861  
  
# ----- V S E 0 0 2 -----  
VSE002  
VSE002.vseHost=192.168.21.41  
VSE002.vsePort=2862  
  
# ----- V S E 0 0 3 -----  
VSE003  
VSE003.vseHost=192.168.21.41  
VSE003.vsePort=2863  
  
# ----- V S E 0 0 4 -----  
VSE004  
VSE004.vseHost=192.168.21.41  
VSE004.vsePort=2864
```


Virtual VSEⁿ FTP Server

Local site: c:\VSE\Connectors\

Filename	Filesize	Filetype	Last modified
..			
Health Checker		File folder	11.06.2022 12:30:38
LFP		File folder	24.05.2022 11:47:57
Navigator		File folder	09.05.2022 14:09:00
vsencon630_GA		File folder	03.05.2022 10:14:50

4 directories

Remote site: //ICCF

- ICCF
 - LIBR
 - ? USYSRS
 - ? OEMLIB
 - ? PRD1
 - ? PRD2
 - ? PRIMARY
 - ? USERLIB
 - ? VSEVTAM
 - POWER
 - ? CRE
 - ? LST
 - ? PUN
 - ? RDR
 - ? XMT
 - VSAM
 - ? #VSAM.#CICS.DBDCICCS
 - ? VSAM.MASTER.CATALOG
 - ? VSE5.USER.CATALOG
 - ? VSESP.USER.CATALOG

Filename	Filesize	Filetype	Last modified	Permissions	Owner/Group
59		File folder	13.06.2022 01:02:00	dr--r--r--	vse iccflib
58		File folder	13.06.2022 01:02:00	dr--r--r--	vse iccflib
57		File folder	13.06.2022 01:02:00	dr--r--r--	vse iccflib
56		File folder	13.06.2022 01:02:00	dr--r--r--	vse iccflib
55		File folder	13.06.2022 01:02:00	dr--r--r--	vse iccflib
54		File folder	13.06.2022 01:02:00	dr--r--r--	vse iccflib
52		File folder	13.06.2022 01:02:00	dr--r--r--	vse iccflib
51		File folder	13.06.2022 01:02:00	dr--r--r--	vse iccflib
50		File folder	13.06.2022 01:02:00	dr--r--r--	vse iccflib
2		File folder	13.06.2022 01:02:00	dr--r--r--	vse iccflib
10		File folder	13.06.2022 01:02:00	dr--r--r--	vse iccflib
1		File folder	13.06.2022 01:02:00	dr--r--r--	vse iccflib

17 directories

Virtual VSE FTP Server

- Running as a Service

```
[Unit]
Description=Virtual Vsen Ftp Server
After=network.target

[Service]
SyslogIdentifier=vsevftp
ExecStart=/opt/21CSW/vsenvftp/VirtualVsenFtpServer.sh
User=root
Type=simple
Restart=always
#StartLimitAction=reboot

[Install]
WantedBy=multi-user.target
```

VSEⁿ Navigator

- Configuration

VSEn Navigator - Configure Hosts


General Advanced

Host: VSE004 [New...] [Delete...]

Settings

Description: VSE004

TCP/IP Address: 192.168.21.41

Port: 2864 [Default] 

Default user ID: SYSA Use LDAP sign-on

Use SSL connection (you must then specify an SSL properties file)

SSL properties file:

[Edit] [File Dialog...]

Global timeout (in sec.): 60 [Default]

[Save] [Close] [Help]

VSEⁿ Navigator

VSEn Navigator - VSE005 (User=SYSA) - Librarian/IJSYSRS/SYSLIB

File Edit Selected Configuration Functions Help

Filter: \$0*.PROC Lock:

Member	Description	Path	Creation	
\$0JCL001.PROC	Executable Procedure	Librarian/IJSYSRS.SYSLIB	2022/05/25 - 15:27:23	
\$0JCL002.PROC	Executable Procedure	Librarian/IJSYSRS.SYSLIB	2022/05/25 - 15:27:23	
\$0JCL7GF.PROC	Executable Procedure	Librarian/IJSYSRS.SYSLIB	2022/05/25 - 15:22:25	
\$0JCL790.PROC	Executable Procedure	Librarian/IJSYSRS.SYSLIB	2022/05/25 - 15:22:25	
\$0JCL.PROC	Executable Procedure	Librarian/IJSYSRS.SYSLIB	2022/05/25 - 15:24:19	2022/05/

2726 member(s) | 60935 record(s) | 25256 block(s) used | 0 locked | sorted by Update

VSEⁿ Navigator

- VSAM Space

Display VSAM Space Usage - Host VSE001

Catalogs

- VSAM.MASTER.CATALOG
- BUILD.USER.CATALOG
- DRIVER.USER.CATALOG
- VSESP.USER.CATALOG
- VTAD62.USER.CATALOG

Total space: 283,4 MB
Used space: 84,37 MB
Free space: 199,02 MB (70%)

VSAM Space Usage for VSESP.USER.CATALOG

Dataspace	Volume	Devtype	Datasets	Total	Used	Free
	SYSWK1	3390	0	47 MB	0	47 MB
	SYSWK1	3390	1	8 MB	8 MB	0
	SYSWK1	3390	0	84 MB	0	84 MB
	DOSRES	3390	29	114 MB	49 MB	65 MB
	SYSWK1	3390	17	29 MB	26 MB	2 MB

Got max RC = 0 from LISTCAT.

Close Export Help Job class P

- Online Cluster Information

VSE.BSTCNTL.FILE - Properties

Data Set Name Cluster: VSE.BSTCNTL.FILE

Cluster Component Volumes

General Attributes

Key Length	255
Average Record Length	400
Max Record Length	65535
Buffer Space	12288
EXCP Exit	(NULL)
CI Size	4096
CIs per CA	108
Share Options	(4,3)
Compression State	-

DASD Allocation

Allocation Type	TRACK
Primary Allocation	18 Tracks
Secondary Allocation	9 Tracks
Primary Useclass	0
Secondary Useclass	0
HALRBA or CI	884736
HUSRBA or CI	442368
Extents	1

Record Statistics

Total Records	555
Deleted	0
Inserted	129
Updated	469
Retrieved	2167

CI/CA Statistics

CI Splits	16
CA Splits	0
CI Freespace	0 %
CA Freespace	0 %
Freespace	432 KB
EXCPs	2294

Close Help

VSEⁿ Navigator

- Volume Information

Display VTOC Utility - Host VSE001, Volume = WORK63

General Information | Volume Layout

VTOC Information		Disk Information	
Label ID	VOL1	Serial Number	WORK63
Sequence	0	Owner ID	
Type	PRIME	Disk type	CKD
Cyl./Track	3337 0 ... 3337 14	Initialized Labels	748
Tracks	50055 ... 50069	Total Tracks	50069
Alternate Track Information:		Free Tracks	21180
Location	0 0		
Number of Tracks	0		
Used space in VTOC: (2%) (16 of max. 773 file entries)		Used space on disk: (57%)	
VSAM Information		Date/Time	
Timestamp	22147 11:24	Date:	06/13/2022
Location	C 3337,T 0,R 2	Time:	07:59
Catalog Recovery Area (CRA)	0		

Close Export Help

- VTOC

Display VTOC Utility - Host VSE001, Volume = WORK63

General Information | Volume Layout

Slot	Filename	Begin Track	End Track	Size in
	DTSUTIL.WORK-FILE.1	1	1799	
	DSERV.PRINTOUT	1800	1859	
	FSU.IMEMBER.AREA	1860	2069	
	COMPARE.IMEM.AREA	2070	2669	
	DTRFSU.INPUT.AREA	2670	2729	
	DTRFSU.OUTPUT.AREA	2730	2789	
	DTRFSU.SORTED.OUTPUT.AREA	2790	2849	
	Free space	2850	2999	
	PUN.I.MEM.AREA	3000	4499	
	PUN.I.MEM.AREA2	4500	5999	

Close Export Help

VSEⁿ Navigator – Online LIBR

VSEn Navigator - VSE005 (User=SYSA) - Librarian/IJSYSRS/SYSLIB

File Edit Selected Configuration Functions Help

Filter: \$IPL* Lock:

Member	Description	Path	Creation
\$IPLRT2.PHASE	VSE executable file	Librarian/IJSYSRS.SYSLIB	2022/05/25 - 15:22:24
\$IPLASL.PROC	Executable Procedure	Librarian/IJSYSRS.SYSLIB	2022/05/25 - 15:23:07
\$IPLGFG.PROC	Executable Procedure	Librarian/IJSYSRS.SYSLIB	2022/05/25 - 15:22:25
\$IPL90.PROC	Executable Procedure	Librarian/IJSYSRS.SYSLIB	2022/05/25 - 15:22:25
\$IPL001.PROC	Executable Procedure	Librarian/IJSYSRS.SYSLIB	2022/05/25 - 15:27:23
\$IPL002.PROC	Executable Procedure	Librarian/IJSYSRS.SYSLIB	2022/05/25 - 15:27:23
\$IPLESA.PROC	Executable Procedure	Librarian/IJSYSRS.SYSLIB	2022/05/25 - 15:24:18

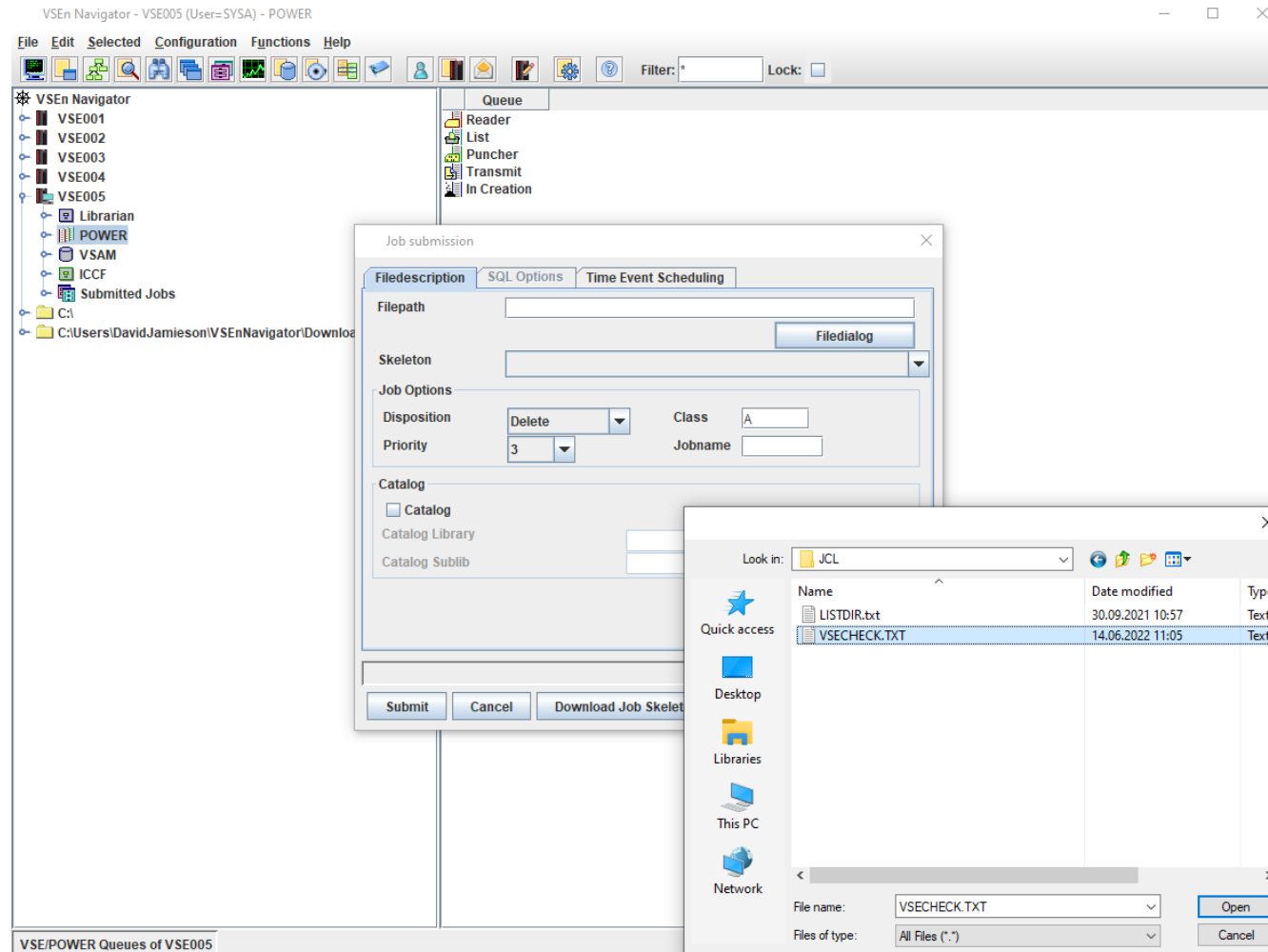
7 member(s) | 192 record(s) | 100 block(s) used

Ln 1, Col 1 | 100% | Windows (CRLF) | UTF-8

```

$IPL001.PROC - Notepad
File Edit Format View Help
0009,$$A$SUPI,NOPDS,VIO=512K,VPOOL=64K,LOG,IODEV=1024
ADD 009,3277
ADD 00C,2540R
ADD 00D,2540P
ADD 00E,1403
ADD 00F,1403
ADD 01F,3277
ADD 02E,PRT1
ADD 080:087,3277
ADD 180:187,3490
ADD 220:22F,3490
ADD 240:244,ECKD
ADD 800:802,OSAX
ADD 900,FBA
ADD D99,CTCA,EML
ADD FDF,FBAV
ADD FEC,3505          POWER DUMMY READER, DO NOT DELETE
ADD FED,2520B2        POWER DUMMY PUNCH, DO NOT DELETE
ADD FEE,PRT1          POWER DUMMY PRINTER, DO NOT DELETE
ADD FEF,PRT1          POWER DUMMY PRINTER, DO NOT DELETE
ADD FFA,3505          ICCF INTERNAL READER, DO NOT DELETE
ADD FFC,3505          ICCF DUMMY READER, DO NOT DELETE
ADD FFD,2520B2        ICCF DUMMY PUNCH, DO NOT DELETE
ADD FFE,PRT1          ICCF DUMMY PRINTER, DO NOT DELETE
ADD FFF,CONS          DUMMY CONSOLE, DO NOT DELETE
SET ZONE=EAST/01/00
DEF SYSCAT=DOSRES
DEF SYSREC=SYSWK1
SYS BUF SIZE=1500
SYS NPARTS=120
SYS DASDFP=YES
SYS SEC=NO
  
```

VSEⁿ Navigator – Job Submission



VSEⁿ Navigator – POWER Queues

VSEn Navigator - VSE005 (User=SYSA) - POWER/List

File Edit Selected Configuration Functions Help

Filter: * Lock:

Job	Disposition	Class	Priority	Records	Pages	Copies	Format	From user	at node	To user
LINKTSQ.531	D (delete)	Q	3	41	5	1	MCC SYSA	SYSA		SYSA
LINKTSQ.532	D (delete)	Q	3	694	23	1	MCC SYSA	SYSA		SYSA
VSECHECK.781	D (delete)	L	3	5133	96	1	MCC SYSA	DAVIDJ		DAVIDJ
AUTONAME.778	D (delete)	A	3	48	4	1	MCC SYSA	SYSA		SYSA
BASEREST.7	D (delete)	A	3	153	6	1	MCC SYSA	SYSA		SYSA
CEEWARC.118	D (delete)	A	4	21	2	1	MCC SYSA	SYSA		SYSA
CLEANUP.23	D (delete)	A	3	135	6	1	MCC SYSA	SYSA		SYSA
DFHOSTAT.452	D (delete)	A	3	55	6	1	MCC DAVE	DAVE		DAVE
DTRIASI.42	D (delete)	A	5	13	3	1	MCC SYSA	SYSA		SYSA
DTRIHard.41	D (delete)	A	5	19	4	1	MCC SYSA	SYSA		SYSA
DTRIJBld.44	D (delete)	A	3	53	3	1	MCC SYSA	SYSA		SYSA

VSECHECK.781.0 - Notepad

File Edit Format View Help

General Purpose Register Cross Reference

HLASM R6.0 2022/06/14 10.14 Page 93

Register	References (M=modified, B=branch, U=USING, D=DROP, N=index)
0(0)	74 79M 89M 93M 117 187 192M 195M 198 202M 209M 448M 564M 565
1(1)	74 89 90 91M 93M 95M 96U 101 102 103D 117 188M 189 193 198 209M 237M 247N 248 249N 263M 264 311M 340 342N 345 358M 387 389N 392 441M 446N 461M 461 462M 464 489M 518 520N 523 586M 615 617N 620 666M 666 667M 669 697M 697 698M 700 725M 754 756N 759
2(2)	74 117 126M 184M 188 209M
3(3)	74 117 126M 209M
4(4)	74 117 126M 209M 278M 302U 303M 418U 420M 549U 551M 646U 648M
5(5)	74 117 126M 209M 275M 276M 278M 280M 281 419U 433M 446
6(6)	74 117 126M 209M 277M 278 279M 280 550U 563M 565M 647U 681M
7(7)	74 117 126M 209M 231M 249 263 682M 684
8(8)	74 117 126M 209M 232M 247
9(9)	74 117 126M 209M
10(A)	74 117 126M 209M 683M 683 684M 685 714
11(B)	74 107M 108M 109 110M 111U 115 117 118M 118 125M 126M 209M
12(C)	74 77M 78U 117 126M 209M
13(D)	74 100 101 102M 104U 117 126M 184 185M 185 186 187 209
14(E)	74 90M 93M 95 117 126M 127B 137M 147M 157M 167M 177M 209M 210B 340M 343M 387M 390M 518M 521M 615M 618M 754M 757M
15(F)	74 83M 85M 85 92M 92 93M 117 119B 136M 138M 138 146M 148M 148 156M 158M 158 166M 168M 168 176M 178M 178 186 193M 195 205M 205 209M 252M 253 282M 282 285M 341M 341 342M 343 344M 345 348M 349 388M 388 389M 390 391M 392 395M 396 402M 402 447M 447 519M 519 520M 521 522M 523 526M 527 533M 533 616M 616 617M 618 619M 620 623M 624 630M 630 755M 755 756M 757 758M 759 762M 763 769M 769

Diagnostic Cross Reference and Assembler Summary

HLASM R6.0 2022/06/14 10.14 Page 94

No Statements Flagged in this Assembly

Ln 1, Col 1 100% Windows (CRLF) ANSI

VSEⁿ Health Checker

- Delivered with installation package
- Linkedit DFH0STAT (ICCF library 59)
- Submit LINKTSQ JCL (Assembles and Catalogs CHKTSEN)
- CEDA Define
 - Program CHKTSEN (ASSEMBLER)
 - Transaction CHKT

VSEⁿ Health Checker

VSEn Health Checker - Data loaded from: VSE005(192.168.23.18)

File Selected Configuration Help

Storage Below Storage Above CDSA / SDSA RDSA / UDSA ECDSA / ESDSA ERDSA / EUDSA

VSEn Health Checker

- VSE005
 - OLTP
 - F2
 - General
 - Storage Layout
 - LE-Options
 - LSR Pools
 - TS Queues
 - System
 - General
 - IPL
 - Turbo Dispatcher
 - Priority Settings
 - Security
 - Storage
 - Partition Layout
 - Memory
 - System Directory List
 - VCDD
 - General
 - POWER
 - Status
 - TCPIP

Area	Size (KB)	Size (MB)
Free GETVIS-24	2648	2.58
Used GETVIS-24...	3496	3.41
Free DSA	3584	3.50
User DSA (UDSA)	256	0.25
Readonly DSA (...)	512	0.50
Shared DSA (SD...)	256	0.25
OLTP DSA (CDSA)	512	0.50
Partition Progra...	4	0.00

POWER Job Name	CICSICCF	Peak DSA Size	1536 KB
VSE Job Name	CICSICCF	Peak DSA Used	944 KB
Phase Name	DFHSIP	DSA Limit	5120 KB
Part. Begin Addr.	500000	Max. Ever Used GETVIS-24	8688 KB
Storage Prot.	Active		

Note: issue a GETVIS nn,RESET after OLTP startup to get a correct max_ever_used_24 value.

16MB

5 MB

- Public Key (90)
- Partition Key (B0)
- Readonly Key (00)

VSE005

VSEⁿ Health Checker – Partition Layout

VSEn Health Checker - Data loaded from: VSE005(192.168.23.18)

File Selected Configuration Help

VSEn Health Checker

- VSE005
 - OLTP
 - F2
 - General
 - Storage Layout
 - LE-Options
 - LSR Pools
 - TS Queues
 - System
 - General
 - IPL
 - Turbo Dispatcher
 - Priority Settings
 - Security
 - Storage
 - Partition Layout**
 - Memory
 - System Directory List
 - VCDD
 - General
 - POWER
 - Status
 - TCPIP

BG F1 F2 F3 F4 F5 F6 F7 F8 F9 FA FB Shared Storage R1

Area	Size (KB)	Percent
Unused Shared	960	-
V-Pool	64	-
Label Area (SLA)	108	-
Free GETVIS 24	1104	59.0 %
Used GETVIS 24	756	40.0 %
VLA	1296	-
SDL	64	-
Supervisor	768	-

The unused shared storage below should always be smaller than 50 KB

PFIX Below Actual	228 KB	PFIX Above Actual	12308 KB
PFIX Below Limit	14684 KB	PFIX Above Limit	2048052 KB
SVA24 VSize	1360 KB		
SVA24 VAddr	C0000		

5 MB

0 MB

VSE005

VSEⁿ Health Checker – POWER Status

VSEn Health Checker - Data loaded from: VSE005(192.168.23.18)

File Selected Configuration Help

VSEn Health Checker

- VSE005
 - OLTP
 - F2
 - General
 - Storage Layout
 - LE-Options
 - LSR Pools
 - TS Queues
 - System
 - General
 - IPL
 - Turbo Dispatcher
 - Priority Settings
 - Security
 - Storage
 - Partition Layout
 - Memory
 - System Directory List
 - VCDD
 - General
 - POWER
 - Status
 - TCPIP

■ Status Extents Internal

General

Service Level	GA-LEVEL
Present Session Start	PA
Spool Limit Percentage	90 %
Start Phase	IPWPOWER
PNET Nodename	-----
Shared Spooling SYSID	-, MRTKN = 000000D4

Partition Storage

Total Partition Storage	32768 KB
Partition Storage Above	21504 KB
Fixable Storage Allocated	300 KB
Max. Fixed Storage in Present Session	100 KB
Currently Fixed Storage	92 KB
Virtual Storage Occupied By Phases	-1 KB
Unused Storage Remaining Below Size Boundary	556 KB

Account File

Account File Name	IJAFILE
Total Tracks	90
Account File Percent Full	23 %

Queue File

Queue File Name	IJQFILE
Total Tracks	15
Total Queue Records	1886
Max no. of q-recs used since last coldstart	128
Used Records	67
Free Records (incl. 10 for cushion)	1819
Lost Records	0
Queue File Percent Full	4 %

Data File

Data File Name	IJDFILE
Total Tracks	1920
DBLK Size	7548 Bytes
DBLK Group Size	8 DBLKs
Total DBLK Groups	1680
Max no. of DBLK groups used since last coldstart	149
Used DBLK Groups	88
Free DBLK Groups (incl. 20 for cushion)	1592
Lost DBLK Groups	0
Data File Percent Full	5 %

VSE005

QUESTIONS?

